

NET METERING AND RENEWABLE CREDIT

RENEWABLE ENERGY ON THE PENINSULAS

Dreary, cloudy Washington? It's really not that dreary. During the summer months especially, the region enjoys considerable sunlight.

Thanks to all that sunlight and the PenLight net-metering program, you can build energy credits in the summer months and work them off during our darker months.



Solar panels also operate more efficiently in our cooler summer weather, which means more power than hotter climates, not less. Solar energy systems keep working on cloudy days, too, collecting scattered light and generating power.

Sure, cities such as Gig Harbor and Portland may not produce as much solar power as the southwestern states, but we still generate enough to make solar a financially and environmentally viable solution.

During our long, sunny summers, your production can be much higher than what your energy use might be. That means you're spinning your meter backward and generating credits with PenLight. If your system is matched to your consumption patterns, it's possible you can generate enough credits during the summer to offset all of your winter consumption.

Washington offers a rich set of incentives for solar, both at home and for your business, including cash incentives for the power your system produces!

In 2017, the state legislature approved the Renewable Energy System Incentive Program. It's intended to reward solar system owners for the benefits their clean energy gives to the state of Washington. This program will enable thousands more to go solar during the program's eight-year timeline.

Want to know more? Please visit our website - <https://www.penlight.org/energy-services/net-metering-and-renewable-credit/>

ADDITIONAL RESOURCES

www.solarinstallersofwa.org

www.northwestsolarcenter.org

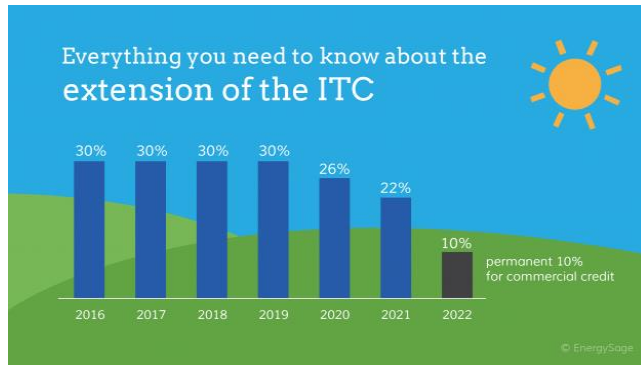
www.solarwashington.org

FEDERAL TAX CREDIT, WA STATE SOLAR INCENTIVES, & NET METERING WITH PENLIGHT

1. FEDERAL TAX CREDIT

Please visit - <https://www.energy.gov/savings/residential-renewable-energy-tax-credit>

The federal solar tax credit, also known as the investment tax credit (ITC), allows members to deduct a percentage of the cost of installing a solar energy system from federal taxes. The ITC applies to both residential and commercial systems, and there is no cap on its value.



2. WASHINGTON STATE SOLAR INCENTIVES (WSU ENERGY PROGRAM)

Please check WSU EE's website for the latest information on the Renewable Incentive Program

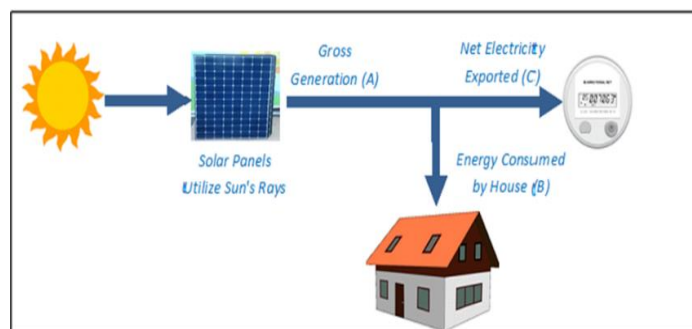
<http://www.energy.wsu.edu/RenewableEnergySystemIncentiveProgram.aspx>

Solar owners receive the same, fixed production incentive rate for a program term of 8 years, or until 50% of cost recouped, whichever comes first. Starting incentive rates step down over time, and stay fixed for the project's program term:

| Fiscal Year | Base Rate (\$/kWh) | | Made-in-WA bonus (\$/kWh) |
|-------------|------------------------|-------------------------------|---------------------------|
| | Residential, Community | Commercial, Shared Commercial | |
| 2018 | \$0.16 | \$0.06 | \$0.05 |
| 2019 | \$0.14 | \$0.04 | \$0.04 |
| 2020 | \$0.12 | \$0.02 | \$0.03 |
| 2021 | \$0.10 | \$0.02 | \$0.02 |

3. NET METERING AND INTERCONNECTION WITH PENLIGHT

Net Metering allows members to get credit on monthly bills for energy they feed back to the grid.



$$\text{Net meter reading} = (\text{total electricity generated}) - (\text{total electricity consumed})$$